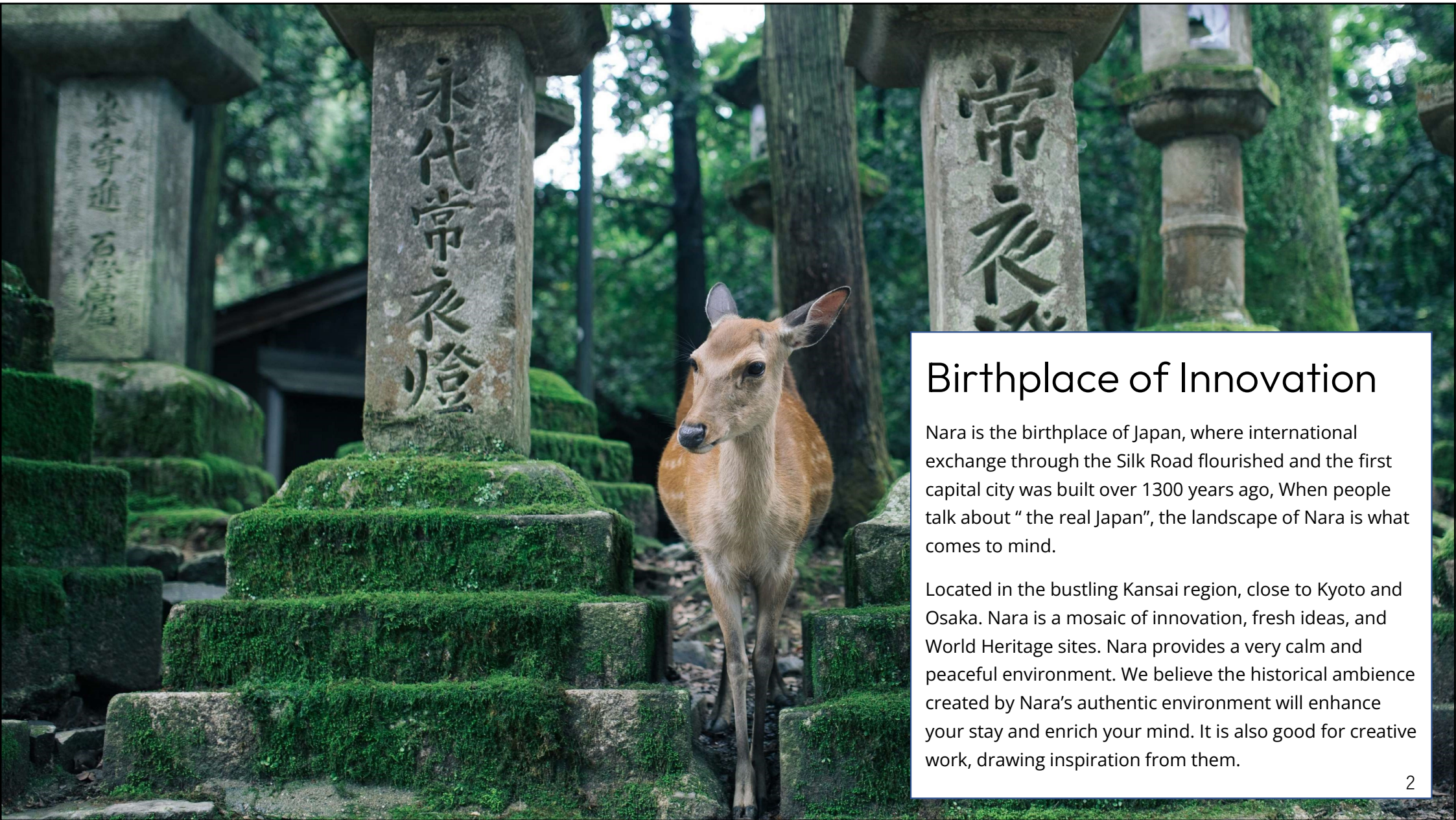




INVEST
IN NARA

Nara City

Birthplace of Innovation in Japan



Birthplace of Innovation

Nara is the birthplace of Japan, where international exchange through the Silk Road flourished and the first capital city was built over 1300 years ago. When people talk about “the real Japan”, the landscape of Nara is what comes to mind.

Located in the bustling Kansai region, close to Kyoto and Osaka, Nara is a mosaic of innovation, fresh ideas, and World Heritage sites. Nara provides a very calm and peaceful environment. We believe the historical ambience created by Nara's authentic environment will enhance your stay and enrich your mind. It is also good for creative work, drawing inspiration from them.

A City With A Proud History

The ancient capital, Nara, is surrounded by rich nature and is nurtured by the eternal history in which the city has pride.

As a termination point of the Silk Road, Nara has roots which accept many foreign cultures and incorporate them into our own.

More than 1,000 years have passed since the Nara era flourished, and even now, human exchange has continued through new cultural spots and events, traditional artwork, food, and new findings, taking advantage of the landscape and culture of the ancient capital.



WHY CHOOSE NARA?

5 Reasons to Relocate to Nara City

1. Creative environment
2. Accessibility
3. Very Family-Friendly
4. Highly Skilled and Educated Workforce
5. Ideal for Business Continuity Plan (BCP)



NARA IS INSPIRING



The Nara Prefectural Convention Center is the largest conference center in Nara. The convention facility is equipped with a large conference room that can accommodate up to 2,000 people, as well as medium and small conference rooms.

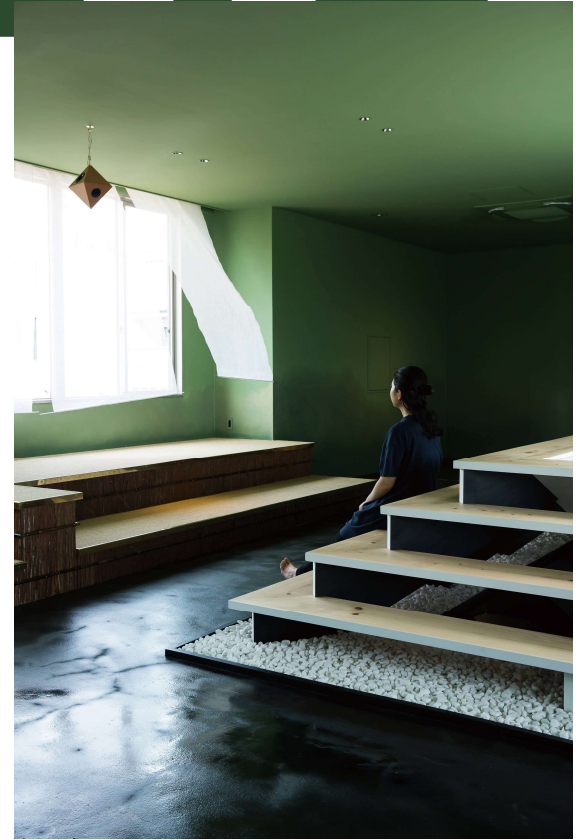
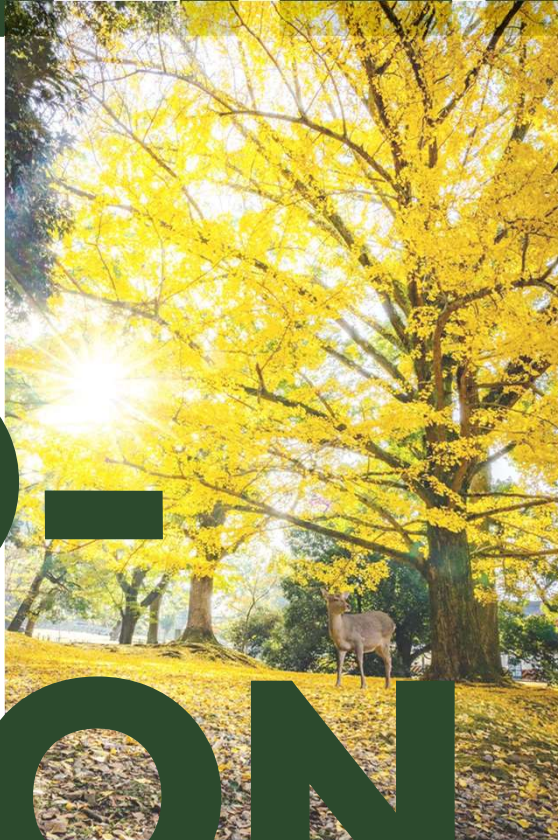
BONCHI is a business start-up support facility in Nara City, equipped with various functions such as a co-working space, open floor, meeting rooms, café and shop.



HISTORY MEETS



INNO- VATION



GETTING TO NARA:

DOMESTIC TRANSPORT



★ Nara City

 
Ground Transit Lines
Kintetsu Railway
Japan Rail Group

1 Tokyo
🚄 3 hrs. 23 mins.
From JR Tokyo

2 Nagoya
🚄 1 hr. 37 mins.
From JR Nagoya
🚗 2 hrs. 31 mins.
From Chubu Int'l Airport

3 Kyoto
🚄 34 mins.
From Kintetsu Kyoto

4 Osaka
🚄 34 mins.
From Kintetsu Namba
🚗 1 hr. 32 mins.
From Kansai Airport
🚗 1 hr. 25 mins.
From Kansai Airport

5 Hiroshima
🚄 2 hrs. 34 mins.
From JR Hiroshima

6 Fukuoka
🚄 4 hrs. 8 mins.
From JR Hakata
🚗 3 hrs. 9 mins.
From Fukuoka Airport

GETTING TO NARA:

INTERNATIONAL TRANSPORT

- 
- 1 Seoul ✈ 1 hr. 3 min.
 - 2 Shanghai ✈ 1 hr. 30 mins.
 - 3 Taiwan ✈ 2 hrs. 30 mins.
 - 4 Hong Kong ✈ 3 hrs. 30 mins.
 - 5 Singapore ✈ 6 hrs.
 - 6 Sydney ✈ 9 hrs. 45 mins.
 - 7 Dubai ✈ 10 hrs.
 - 8 Frankfurt ✈ 12 hrs.
 - 9 Paris ✈ 12 hrs. 30 mins.
 - 10 London ✈ 14 hrs. 30 mins.
 - 11 New York ✈ 15 hrs. 20 mins.

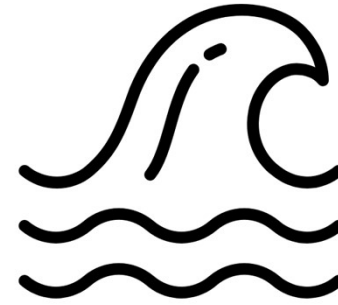
Note: Travelling to Nara will require flights to nearby airports with additional ground transportation required.

Ideal for BCP

Nara City is an area with low risk of natural disasters.

There are no oceans, volcanos, or major rivers, making it safe for industries that handle valuable data.

Top-ranked prefecture in Japan for number of buildings of national treasures.



No Tsunami



No Volcanos



Highly Skilled & Educated Workforce

Connecting people and companies to the future in Nara City, a "treasure house of human resources".

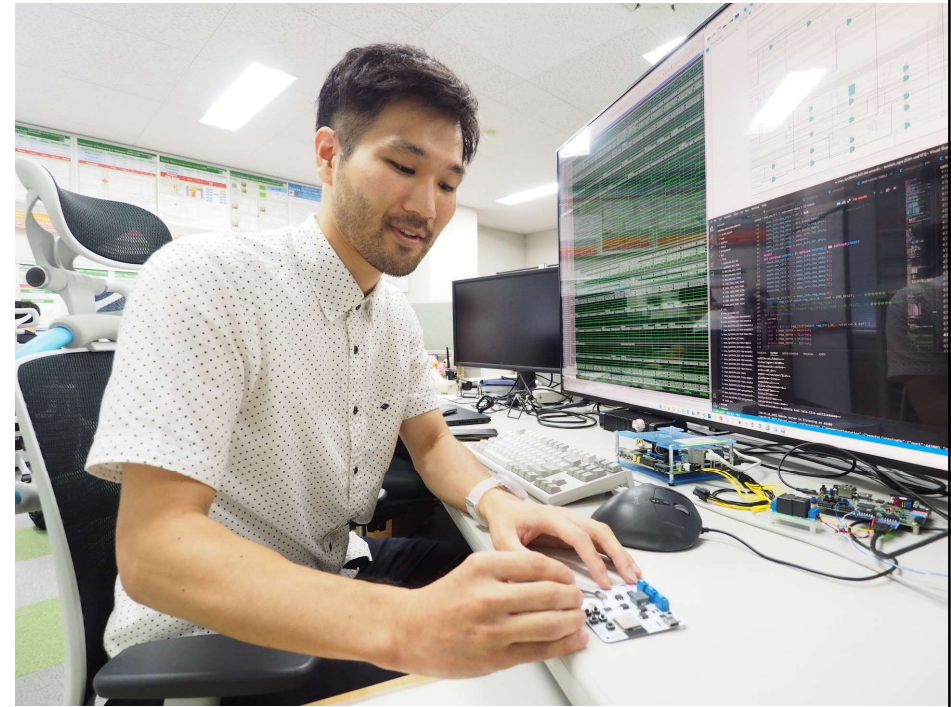
Nara nurtures internationally-minded, next-generation leaders equipped for industries of the future.

RANKED #1

Top-ranked prefecture in Japan for Percentage of students going on to Tokyo University and Kyoto University

Cooperation with Academic Institutions

Matching talented people and companies for pilot projects and proofs of concepts.



Very Family-Friendly

Nara City is known as a “Child Friendly City”.

In addition to its excellent environment for children, lower cost of living than major cities in the Kansai Region, with land prices lower than those in metropolitan areas such as Osaka, and are therefore, making it highly attractive for families.

Ranked for its work and life attractiveness No.1 in Kansai area, No.6 in Japan.



CONNECTING NARA TO THE FUTURE

In addition to being highly valued both domestically and internationally as an international city of tourism and culture, attracting attention as a city of new opportunities and a great place to work..

Nara City provides support to companies with its own entrepreneurship development program.



#1

**Growth of
Startup
Businesses
In Japan**

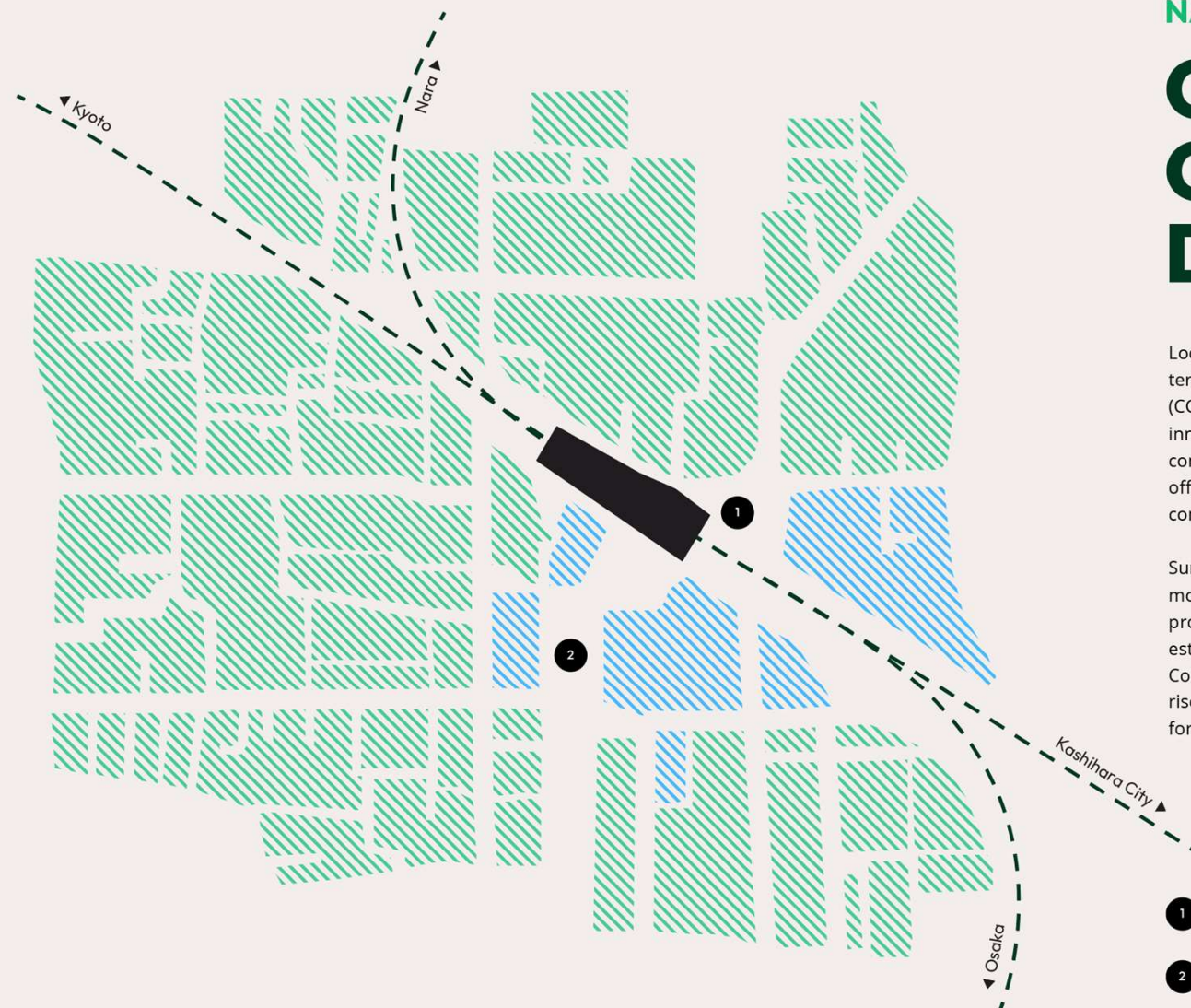
(NIKKEI)

#1

**World
Heritage
Sites in
Japan**

(UNESCO)





NARA'S VISION:

CENTRAL CREATIVE DISTRICT

Located at Yamato Saidaiji, Nara's largest terminal station, the Central Creative District (CCD) is emerging as a dynamic hub for innovation and business. With seamless connections to Kyoto, Osaka, and Kobe, the CCD offers a perfect blend of work and lifestyle convenience.

Surrounded by commercial facilities and modern residences, the area is ideal for professionals and businesses looking to establish a presence in Nara. As the Chamber of Commerce relocates and new office buildings rise, the CCD is set to become a thriving center for creativity, collaboration, and growth.

1 Yamato-Saidaiji station
(Kintestu / JR)

2 Proposed new development
(Highlighted blue)

Subsidies

We support Initial costs for setting up a satellite office.

MAX : 5,000,000 yen

We also introduce other soft incentives.

Please contact us for details.

¥5M

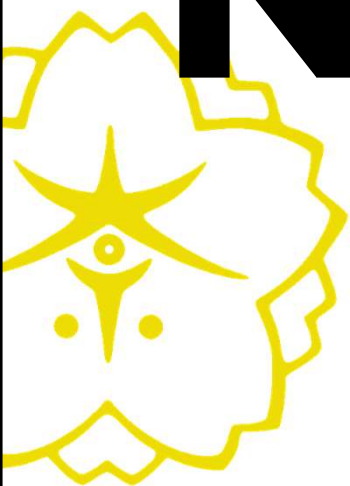


New creative
businesses
supported by
Nara City
since 2020.



Support Services

- Recruitment
- Relocation of personnel and accompanying family members (eg. Office & House search support)
- Other support services (eg. business matching, networking opportunities, local and international promotion etc.)



NARA WELCOMES

DIGITAL NOMADS

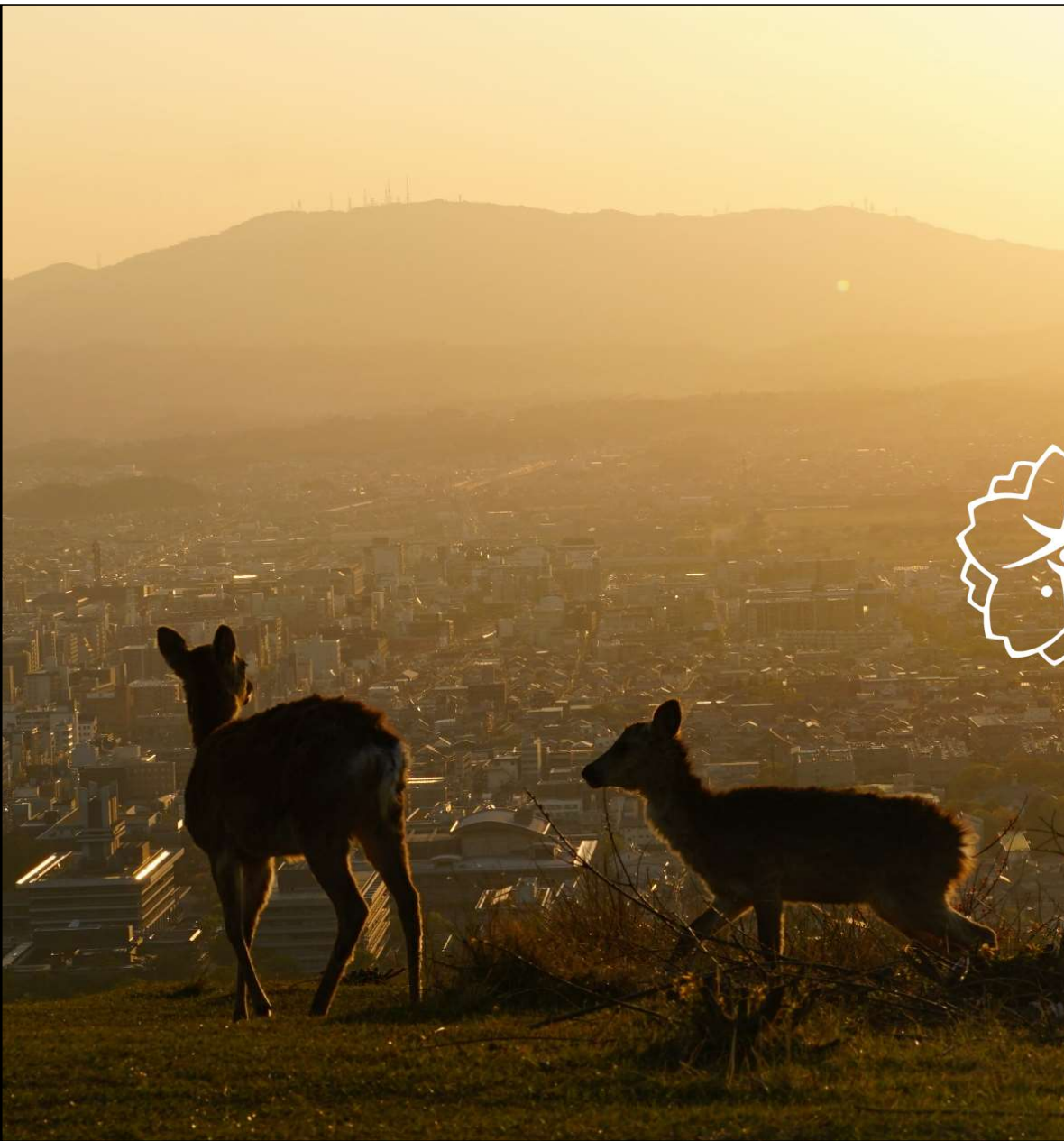


LIVE PLAY CREATE

STAY & WORK for Digital Nomad

We have good Working & Accommodation Plans
for Digital Nomads.





INVEST IN NARA

Thank You!

Please contact us

Invest Nara support Concierge

TEL:+81-742-34-4741

Mail:ricchi-nara@city.nara.lg.jp